

# Journey through Namibia

*A Photographer's Adventure*

March 3–16, 2023

EXPLORER X

EST. 2017 + SEATTLE, WASHINGTON + USA

DJ PHOTOGRAPHY WORKSHOPS  
MOTIVATE, EDUCATE AND INSPIRE



# WELCOME TO NAMIBIA!

At the top of any photographer's bucket list, Namibia is an unforgettable destination for photography both day and night! Namibia is a country of infinite opportunities and diversity, from its topography to its culture and wildlife. Made up of seven cluster regions, Namibia offers travelers a kaleidoscope of activities and adventures to enjoy during their stay in this land of contrasts.

Through this itinerary, we will be exploring many of these areas including vast deserts, some of the highest sand dunes in the world and expansive canyons. We will also be spending several days in a Dark Sky Reserve.

Namibia's NamibRand Nature Reserve, one of Africa's largest private nature reserves, lies in one of the naturally darkest (yet accessible) places on Earth. It was established to help protect and conserve the unique ecology and wildlife of the southwest Namib Desert, and its mission now includes preservation of the area's starry night skies.

The NamibRand International Dark Sky Reserve was only the second place on Earth that was designated with Gold Tier status because of its exceptionally dark skies. The NamibRand International Dark Sky Reserve was also the first International Dark Sky Reserve in the developing world and in Africa.

Namibia has the power to capture your heart, enticing you with its ancient landscapes, friendly people, wildlife and the illumination of its horizons. You will see it drenched in gold when the sun's last rays retire and bathed in starlight under a night sky glittering with thousands of stars.

Doug Johnson will be there with you every step of the way to help you capture your memories in photographs. These locations provide a multitude of opportunities to grow as a photographer, regardless of your level.







# OVERVIEW & HIGHLIGHTS

This trip was handcrafted specifically for people passionate about photography – both during the day and in some of the best dark sky locations. Namibia is an exciting destination renowned for its beautiful landscapes! The food, the people, the history, the culture, the jaw-dropping nature, and outdoor activities make it a perfect location for your photographic adventure!

We've crafted a truly unique and immersive journey of exploration and discovery for you that we know you are going to love. Highlights of this trip include:

- Getting out into nature
- Photographing beautiful and unique landscapes
- Photographing under the night sky
- Photographing the beautiful people of Namibia
- Photographing wildlife near Etosha National Park

Along the way, you will be mentored by Doug Johnson, a fantastic teacher and photographer in his own right who makes these journeys fun learning experiences for photographers of all levels. Doug will not shoot on location but will spend his time helping you hone your photography and processing skills.

The journey has been set up with some optional excursions as well as some time to relax or explore on your own so that the pace can be at your speed.



# YOUR ITINERARY @ A GLANCE

*Please plan to be in Windhoek on 2 March in order that you can meet the group bright and early on 3 March to start our adventure.*

Date	Activities	City @ Accommodation
3 Mar 23	Welcome to Windhoek – Our Trip Starts First Thing This Morning Scenic Drive to the Kalahari Basin Nature Drive through the Kalahari Dunes	Camelthorn Kalahari Lodge Room: Standard Cottage Meals: LDB
4 Mar 23	Early Morning Walk with San Bushmen Afternoon Excursion to Rim of Fish River Canyon <b>Optional:</b> Sunset Nature Drive in Gondwana Canyon Park	Canyon Roadhouse Room: Standard Room Meals: LDB
5 Mar 23	AM Excursion to Rim of Fish River Canyon or Sunrise Hike in Gondwana Canyon Late Morning Excursion to Luderitz/Search for Wild Horses Late Afternoon in Kolmanskop Ghost Town	Luderitz Nest Hotel Room: Comfort Room Meals: LB – dinner own account
6 Mar 23	Morning Walk through the Historic Buildings of Luderitz <b>Optional:</b> Morning Boat Cruise to Halifax Island (extra) Afternoon Photo Review	Wolwedans Desert Lodge Room: Tented Chalet Meals: LDB
7 Mar 23	Full Day to Explore Namib Rand Nature Reserve Activities Include: AM/PM Scenic drives, Bushman walk,, Heart & Home Village Tour, Wolwedans Water Walk and option for e-biking Antares Naked Eye Star Safari and Photo Shoot	Wolwedans Desert Lodge Room: Tented Chalet Meals: LDB
8 Mar 23	Full Day to Explore Namib Rand Nature Reserve <b>Optional:</b> Namib Sky Sunrise Balloon Safari (extra) Antares Naked Eye Star Safari and Photo Shoot	Wolwedans Desert Lodge Room: Tented Chalet Meals: LDB
9 Mar 23	Travel to Namib Naukluft Park – Photo Review after lunch Late Afternoon Excursions to Sesriem Canyon and Elim Dunes Optional: Night Photography (early night for am excursion)	Dead Valley Lodge Room: Tented Chalet Meals: LDB
10 Mar 23	Early morning excursion to Dune 45, Sossusvlei and Dead Vlei Continue by Road Stopping in Kuiseb Canyon and Walvis Bay Overnight in Swakopmund	Ocean House Room: Standard Room Meals: LB – dinner own account







# YOUR ITINERARY @ A GLANCE

Date	Activities	City @ Accommodation
11 Mar 23	Morning at Leisure in Swakopmund Late Morning Excursion to Spitzkoppe Massif/Lunch at Spitzkoppen Lodge Guided Sundowner Walk	<b>Erongo Wild</b> <b>Room: Tented Room</b> <b>Meals: LDB</b>
12 Mar 23	Morning Excursion to San Living Museum / Tour Afternoon San Rock Art and Nature Drive Optional: Evening Photo Shoot	<b>Erongo Wild</b> <b>Room: Tented Room</b> <b>Meals: LDB</b>
13 Mar 23	Continue by Road through small towns of Omaruru and Outjo Afternoon Guided Safari Drive with Sundowners Late Afternoon in Safari Drive on Ongava Reserve	<b>Ongava Lodge</b> <b>Room: Chalet</b> <b>Meals: LDB</b>
14 Mar 23	Morning Game Drive - Etosha National Park Photo Review Late Afternoon in Safari Drive on Ongava Reserve	<b>Ongava Lodge</b> <b>Room: Chalet</b> <b>Meals: LDB</b>
15 Mar 23	Morning Safari Drive on Ongava or in Etosha Afternoon Safari Drive on Ongava followed by Dinner Celebration Optional Night Drive or Trip to the Hide	<b>Ongava Lodge</b> <b>Room: Chalet</b> <b>Meals: LDB</b>
16 Mar 23	Road Transfer back to Windhoek Depart from Windhoek International Airport and On per own arrangements	<b>Meals: B</b>
14 Mar 23	<b>OPTION:</b> Continue by tar road to the NW Etosha Region and Kaokoland Afternoon Safari Drive	<b>Uukwaluudhi Lodge</b> <b>Room: Lodge Room</b> <b>Meals: LDB</b>
15 Mar 23	Morning Visit to Traditional Himba Village Lunch En Route Afternoon Return by Road to Ongava in time for dinner	<b>Ongava Lodge</b> <b>Room: Chalet</b> <b>Meals: LDB</b>

March 3

# WELCOME TO WINDHOEK!

Our adventures will start at about 9:30 am today. Please arrive in Windhoek on 2 March.

You will be met by your guide and your photography guide, Doug Johnson. Once you and the group have collected your luggage, you will be transferred by road to the Western Kalahari Basin with lunch en route in our private vehicle to your hotel. This comfortable vehicle will be our traveling home for the remainder of our journey.

This journey aims to make the most of your time in Namibia with diverse photographic opportunities.

This afternoon we will take a nature drive (with stops for photography) through the Kalahari dunes. Here you will get your first glimpse of the Kalahari landscapes including parallel red sand dunes separated by vegetated grassy dune "streets." Ancient camelthorn trees dot the landscape and wildlife such as giraffe, oryx, springbok and zebra will capture your interest.

The night skies here are also interesting for star photography.

Dinner will be served at the Kalahari Camelthorn Hotel.

Approximate distance: 261 km / 165 miles

**Overnight:** Camelthorn Kalahari Lodge | **Meals:** Lunch, Dinner, Breakfast





March 4

# EXPLORING FISH RIVER CANYON

Early this morning we will wake up for a walk with a San Bushman community. These hunter/gatherers will share with us some of their secrets for living in the Kalahari. Photography is welcome.

From here, we will continue by road to Southern Namibia. During our travels, you will witness a change in the landscape from grassy plains and sand dunes to a rocky semi-desert dotted with desert-adapted plant life such as Quiver trees and euphorbias.

We will arrive in time for an afternoon excursion to the rim of Fish River Canyon. Here you will have an opportunity to shoot vistas of this vast and beautiful canyon landscape in the afternoon and early evening light.

You may also wish to take a nature drive through Gondwana Canyon Park to catch the sunset this evening.

Approximate distance: 380 km / 240 miles

**Overnight:** Canyon Roadhouse| **Meals:** Lunch, Dinner, Breakfast





March 5

## Journey to Luderitz

This morning you will have your second opportunity to photograph Fish Canyon from the rim, now in early morning light and Golden Hour light. We will then depart in the late morning for the old German coastal town of Luderitz. On our way, we will stop to search for the wild horses of the Namib at Garub and watch the landscape change again before our eyes.

Today's highlight will be photographing the Kolmanskop Ghost Town. This town was in full swing during the diamond mining days, but fell into decline. Rooms complete with wallpaper are now being taken over by sand, making for dramatic and unique photographic opportunities.

You may wish to take a guided early morning hike in the Gondwana Canyon Park to photograph sunrise.

Approximate distance: 380 km / 240 miles

**Overnight:** Luderitz Nest Hotel | **Meals:** Lunch, Breakfast with dinner on own account





March 6

# Namib Rand Nature Reserve

This morning we will take a leisurely walk through the historic buildings of Luderitz where you will witness old German colonial buildings including the Art Nouveau Goerke Haus and the Felsenkirche hilltop church with panoramic bay views stretching around to Robert Harbor.

*Optional (extra): You may wish to add a boat trip to Halifax Island via Diaz Point. This excursion can be added to your itinerary.*

We will continue by road to the southern Namib and Namib Rand Nature Reserve. We hope to arrive in time for a photo critique followed by a late afternoon photographic session.

This area is a certified Dark Sky area so each evening we are here will provide you the best opportunities for night photography.

Approximate distance: 400 km / 250 miles

**Overnight:** Wolwedans Desert Lodge | **Meals:** Lunch, Breakfast and Dinner





March 7 and 8

## Namib Rand Nature Reserve

For the next two days, we have time to explore this vast and diverse reserve full of grassy plains set against sand dunes and rugged mountains. Keep an eye out for fairy circles, which are best seen from above.

Activities include morning and evening scenic safari drives in order to find the best photographic spots. Options include a Wolwedans Water Walk, Heart and Home Village Tour, e-biking and Wolwedans Desert sundowners.

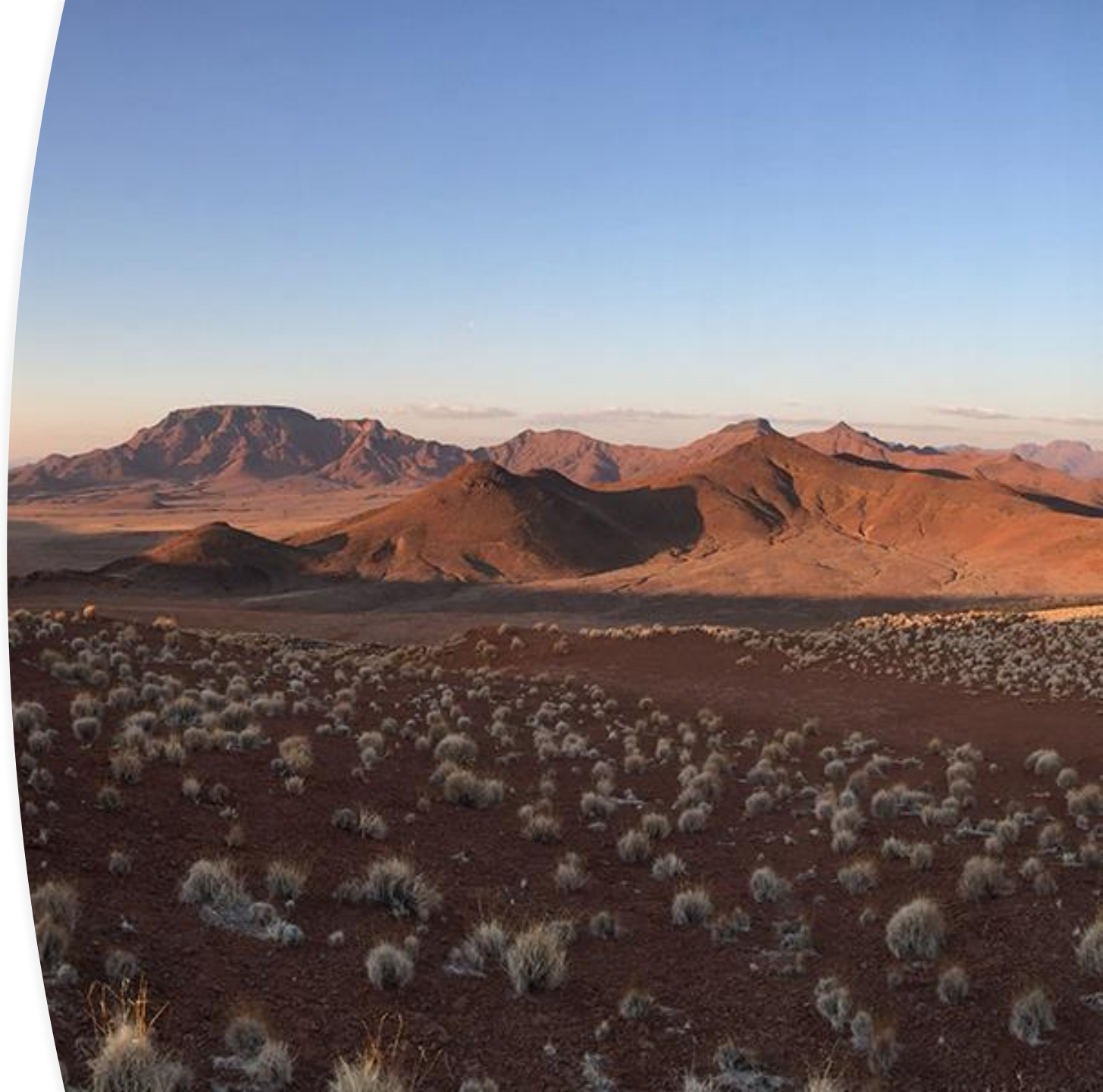
Enjoy the smaller side of Namibian wildlife including lizards, geckos, beetles and the like, along with some of the mega fauna.

After lunch on March 7, we may have an opportunity for a photography critique with Doug.

After dinner we will enjoy the Dark Sky and take some photos of Antares and the Namib Desert landscape.

[Optional \(extra\): You may wish to add a Namib Sky Sunrise Balloon Safari to your adventure. This excursion can be added to your itinerary.](#)

**Overnight:** Wolwedans Desert Lodge | **Meals:** Lunch, Breakfast and Dinner





March 9

## Namib Naukluft Park

After breakfast, we will continue by road into the Namib Naukluft Park. Following lunch there will be a photo review with Doug.,

During the late afternoon, we will be making excursions into Sesriem Canyon and Elim Dune for some photographic opportunities in the golden and blue hour light.

The Tsauchab River has shaped this canyon over millions of years and is one of the few places in the area that holds water year round. The early Afrikaans explorers in the region named the canyon after the fact that they had to tie “ses” (six) leather straps together to create a rope long enough to reach the canyon’s water beneath them. The canyon is narrow in places and worth exploring due to its stunning rock formations.

Elim Dune is the best place in the area from which to watch the sunset.

Approximate distance: 100 km / 65 miles

**Overnight:** Dead Valley Lodge | **Meals:** Lunch, Breakfast and Dinner





March 10

## Namib Dune Belt

Best experienced before the heat of the day, we will be up early this morning for a trip to Dune 45, Sossusvlei and Dead Vlei where photographic opportunities to capture these giant red sand dunes set beneath a bright blue sky abound.

Moving onward during the heat of the day, we will head through Kuiseb Canyon and Walvis Bay to Swakopmund, our home for the evening.

Approximate distance: 350 km / 220 miles

**Overnight:** Ocean House | **Meals:** Lunch, Breakfast with dinner on own account





March 11

## Spitzkoppe and Onward

Today, you will have your morning at leisure in the town of Swakopmund where you may wish to explore some of the old colonial landmark buildings.

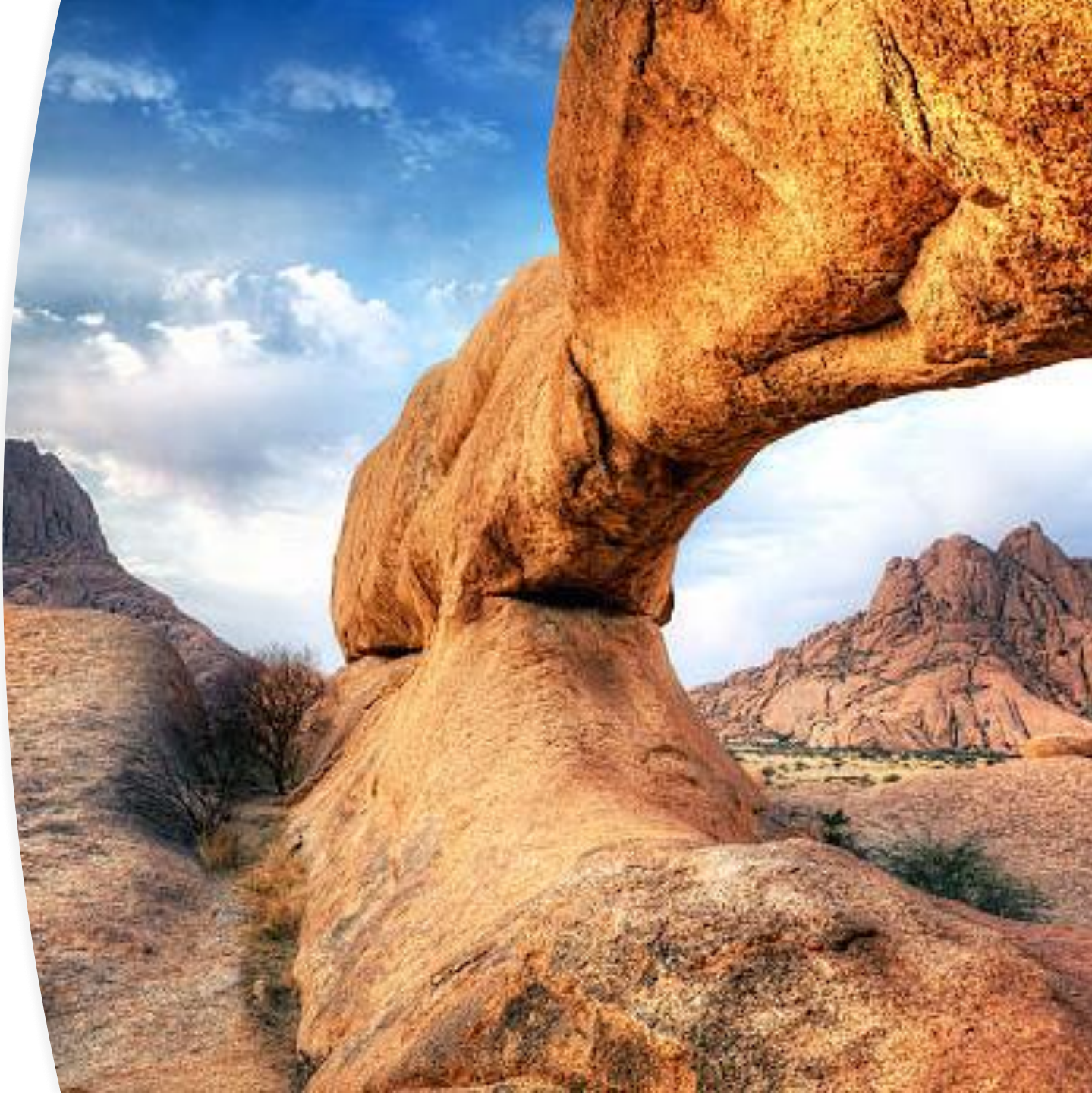
In the late morning, we will depart toward the Erongo Mountains with an excursion to the Spitzkoppe Massif on route with lunch at the Spitzkoppen Lodge. Spitzkoppe is a remarkable granite peak that rises 700 meters above its surroundings. It has been called the “Matterhorn of Namibia.”

Photograph Critique (submit images for review)

We will arrive in the late afternoon at the Erongo Wild where you will have an option to take a guided sundowner walk with sunset and blue hour photography in mind. There is also an opportunity to see and photograph San Rock Art.

Approximate distance: 190 km / 120 miles

**Overnight:** Erongo Wild | **Meals:** Lunch, Breakfast and Dinner





March 12

## San Rock Art

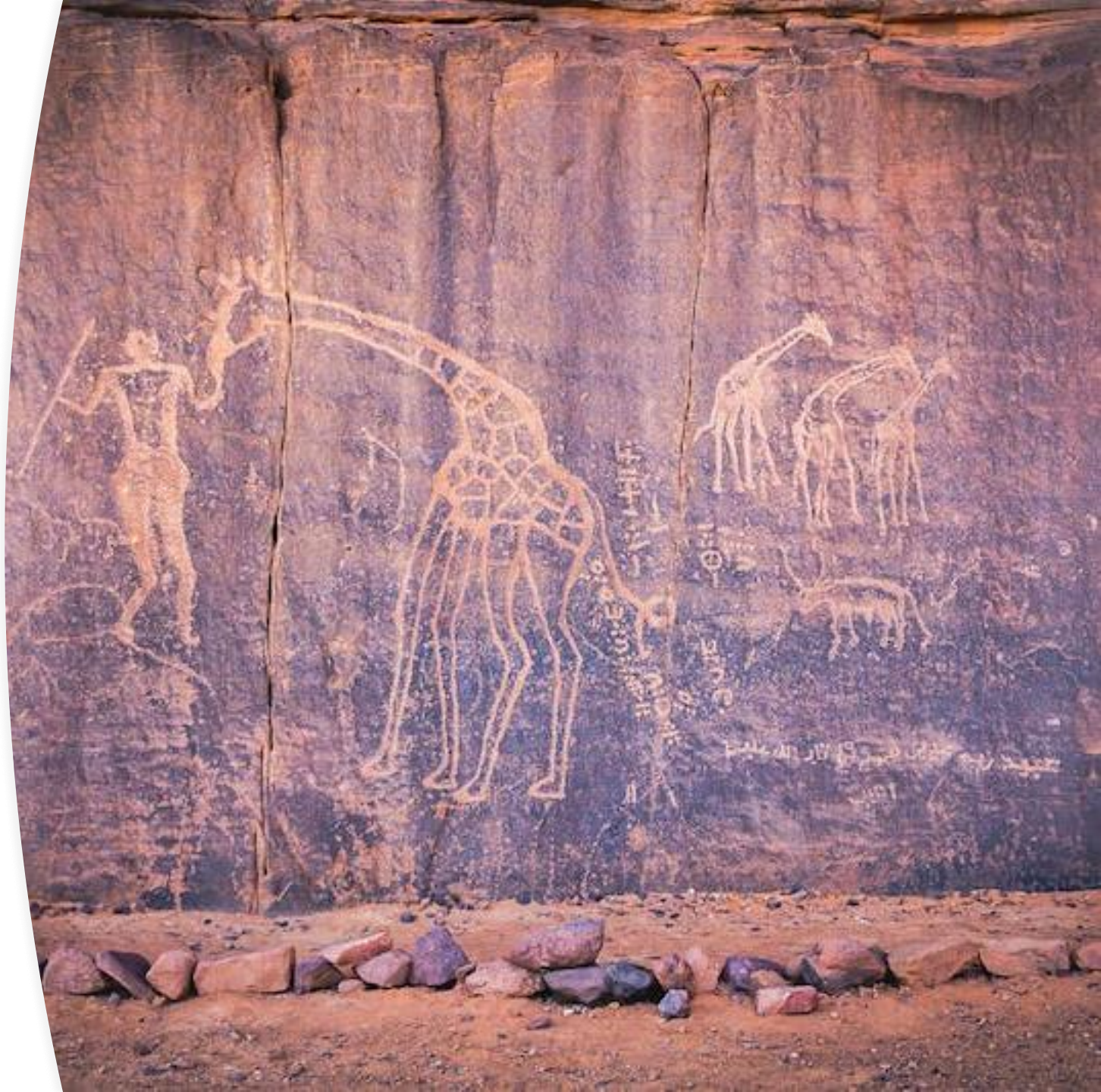
After breakfast we will have an excursion to the San Living Museum for a 'Life in the Village' tour.

The San, or Bushmen, are Indigenous peoples of Southern Africa. Their ancient rock paintings and carvings (collectively called rock art) are found in caves and on rock faces and shelters. The artwork depicts non-human beings, hunters and half-human/half-animal hybrids believed to be medicine men or healers.

This afternoon, get your cameras ready for a guided drive to explore the San Rock Art and the surrounding landscape. Dramatically set against the imposing granite boulders at the foothills of the Erongo mountains, these ancient rock formations are the eroded remains of a volcanic complex about 130 million years old. During this afternoon's activity, you will see countless rock painting sites.

Approximate distance: 350 km / 220 miles

**Overnight:** Erongo Wild | **Meals:** Lunch, Breakfast, and Dinner





March 13-16

## Wildlife Awaits

After breakfast on Day 11, we will continue by road toward Etosha National Park, the country's largest protected wilderness where a wildlife is abundant. We will pass through the small towns of Omaruru and Outjo.

After checking into Ongava Lodge, we will take an afternoon safari drive to see the resident wildlife and enjoy a Namibian sunset.

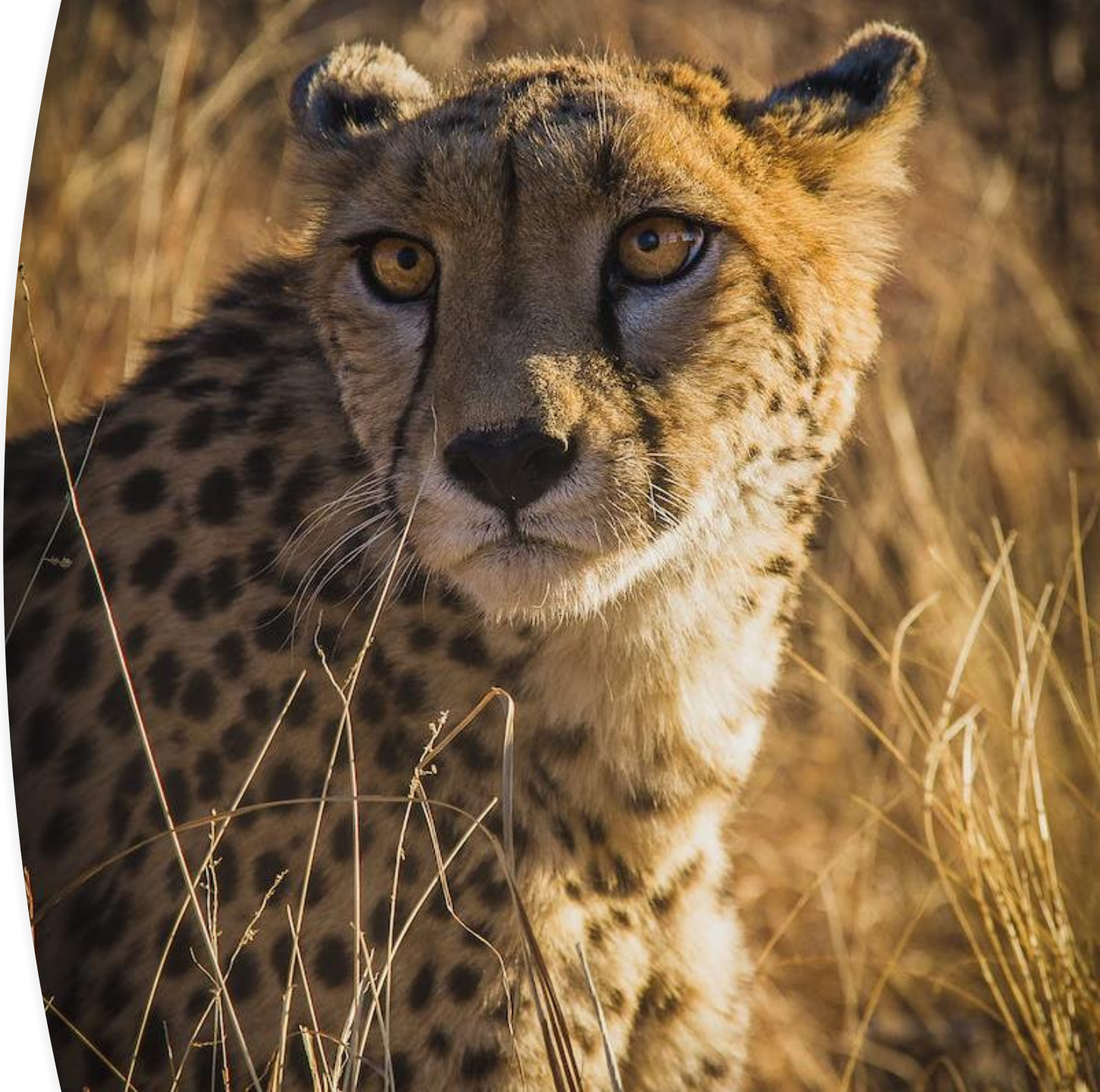
Each day there will be a morning and evening game drive as well as opportunities to spend time in the blind by the waterhole where you will gain a new photographic perspective on the wildlife.

We will have a photo critique mid-day on March 14 or 15.

After dinner, opportunities to shoot some night photography from the lodge or to take a night drive will be available.

Approximate distance: 380 km / 240 miles

**Overnight:** Ongava Lodge | **Meals:** Lunch, Breakfast, and Dinner





March 14-15

## Optional: Kaokaland

This **option** is provided at an additional per interested party.

On Day 12, you will proceed by road to the northwest corner of the Etosha region with your guide to Kaokaland. This is the home of **traditional Himba people**. On Day 12, you will enjoy an afternoon game drive in the area.

On Day 13, you will spend the morning in a traditional Himba village with plenty of opportunities to visit with and photograph. Following lunch, you and your guide will return to Ongava Lodge to rejoin the group.

Approximate distance: 370 km / 230 miles

**Overnight:** [Ukwaluudhi Lodge](#) | **Meals:** Lunch, Breakfast, and Dinner





# Camelthorn Kalahari Lodge

Kalahari Basin | 3 March 2023 | Standard Cottage

---

The Camelthorn Kalahari Lodge is aptly named as it is located between two sand dunes in an area peppered with Camelthorn trees which are endemic to this region. The 12 rondavel-style thatched huts are set against a backdrop of red dune sands, yellow grasses, piercing blue skies and the greens and browns of the wide-spread Camelthorn and Acacia trees.

Here you will experience typically African hospitality. On your first night in Namibia, please take the time to settle in and get a good night's rest.





# Canyon Roadhouse

Fish River Canyon | 4 March 2023 | Standard Room

Fill up on smiles at this out-of-the-ordinary lodge. Resembling a roadhouse of old, the lodge is a 'must-do' stop when visiting the canyon. The outside area hints of the interior with its rusty old Chevys and Fords from a bygone era, adorned with corky quiver trees and desert flora. The large doors open onto an International truck serving as the reception desk, a 'pompstasie' (filling station) bar and an assortment of classic vehicles and transport paraphernalia assembled with an innovative and creative flair - and a good deal of humor! Restaurant tables are placed in between and the cabs of several cars serve as zany fireplaces in the chilly winter months.

Large attractive rooms, positioned around courtyards, make the Roadhouse a comfortable base when visiting the Fish River Canyon, just 14 kilometers away. The resort has a swimming pool and a terrace on which to enjoy Roadhouse specialties like Amarula cheesecake (and the best cappuccino for miles around). A walking trail leads to the best sunset spot - the hill above the lodge looking out onto the flat-topped Holoog Mountain and the Gondwana Canyon Park.





A photograph of a hotel room. In the foreground, a bed is covered with white linens and a pink blanket. In the background, there is a desk with a chair, a television mounted on the wall, and a balcony with a railing overlooking the ocean. A large white circle is overlaid on the left side of the image, containing text.

# Luderitz Nest Hotel

Luderitz | 5 March 2023 | Comfort Room

---

The award-winning four-star Lüderitz Nest Hotel (est. 1998) is one of Namibia's favorite hotels and is located directly on the rocks and sea with its own private tidal beach and walk-on jetty – unique in Namibia! Each room boasts a view of the ocean.

Your stay includes a scrumptious full English breakfast in the acclaimed PENGUIN RESTAURANT. Complimentary Wi-Fi is available throughout the hotel for our residents and patrons.



# Wolwedans Desert Lodge

Wolwedans | 6-8 March 2023 | Tented Chalet

Staying at Desert Lodge contributes to the future of tourism, not only in Namibia but in Southern Africa as a whole, in a long lasting and sustainable way. Previously known as Wolwedans Dunes Lodge, the new **Desert Lodge** has undergone a shake up, and returns as our hospitality training facility. This is part of the Wolwedans Desert Academy based at the Village at Wolwedans. Our goal here is to introduce young people to the tourism and hospitality sector with a long term vision of building a passion for tourism, service excellence and all the details that go into a running a lodge or hotel.

The building style is a combination of wooden structures and canvas blinds, opening up to the desert beyond. The lodge reflects the ambience of a tented camp, but provides the comfort and protection of a permanent building raised on platforms above the dunes. The tented rooms are spaced apart and orientated in a sensitive manner to the environment. We recommend that you sleep with your canvas blinds open to feel the soft evening breeze and marvel at the vast star-studded sky.

Desert Lodge offers a spacious main area consisting of two lounges, a number of sundowner decks, a fireplace, a tea deck, a library, the wine cellar and two dining rooms. The lodge also has a swimming pool, which is suspended above the dunes behind the lodge with 360 degree views.



# Dead Valley Lodge

Luderitz | 9 March 2023 | Tented Chalet

The Dead Valley lodge is situated inside the Namib – Naukluft Park, in between Seriem and Elim Dune on the D826 road leading to the world-famous Dead Valley at Sossusvlei.

The lodge offers twenty free standing climate-controlled luxury tented chalets each with a panoramic view of the Namib Desert with towering red sand dunes, rugged mountain ranges, and arid desert savannahs.

The restaurant serves delicious Namibian – style cuisine whilst guest can relax in the picturesque bar with a swimming pool overlooking the Elim Dune. Games drives are offered in the mornings and afternoons to Sossusvlei and Sesriem Canyons.





# Ocean House

Swakopmund | 10 March 2023 | Standard Room

Ocean House Swakopmund is situated two minutes from the North beach. A walkway all along the beach brings you to several attractions in 10 minutes time, and the center of Swakopmund is a relaxed 15 minute walk from Ocean House. All our rooms are well equipped and spacious, all with a view of our garden. Wi-Fi is available throughout the facility.

Popular points of interest near the guesthouse include The Mole Beach, Palm Beach and Atlanta cinema.







# Erongo Wild

Omaruru | 11-12 March 2023 | Two-Person Tent

---

Just west of Omaruru, The Erongo Wild perches amidst the rugged granite kopjes imminent to Namibia's Erongo Mountains. The lodge is a founder member of the 2,000 square kilometer Erongo Mountain Nature Conservancy, which brings together 30 private landowners in an effort to conserve this diverse area, known for excellent bird watching and hiking. There are also rare and endemic species of fauna and flora here, along with Bushman rock paintings. Mountain, desert and savannah ecosystems converge in this surreal environment where rare and adapted plant, bird and animal life thrives.

This lodge offers twelve luxurious tented chalets, built on stilts among the towering granite boulders. The restaurant is set on top of a hill, offering breathtaking views of the surrounding landscape whilst at the same time tantalizing your senses with our refreshments and cuisine.



# Ongava Lodge

Etosha National Park | 13-16 March 2023 | Chalet

Ongava Lodge is one of Namibia's premier lodges and is situated in the privately owned Ongava Game Reserve, along the southern border of Etosha National park. Placed as it is close to the top of a hill in the foothills of the Ondundozonanandana range, the vantage point is beautiful and overlooks a well-frequented waterhole and the plains beyond.

Ongava Lodge offers luxury accommodation in 14 rock-and-thatch en-suite chalets. There are impressive views over the camp's waterhole from the main lounge and dining areas and there is also an inviting pool to cool off in the heat of the day. Meals are either served in the main dining area under thatch or on the dining deck under the stars.







# HIMBA OPTION: Ukwaluudhi Lodge

Kaokoland | 14 March 2023 | Lodge Room

---

Uukwaluudhi Safari Lodge (Uukwa for short) is located northwest of Etosha National Park. We are a private game reserve in the Uukwaluudhi Conservancy that provides guests with a unique, remote experience filled with wildlife and stunning landscape views in the heart of Kaokoland.

We offer safari game drives on our property and cultural excursions to nearby villages which will give you a new perspective on Namibia and the beautiful Northwest area known as the Kunene Region.

This will be your home base for one night if you choose to visit the Himba Village as a part of your journey.



10 THINGS TO DO

# BEFORE YOU GO ...

- Talk to your Travel Mentor
- Read a book about Namibia
- Watch a movie about Namibia
- Prepare your camera gear
- Check Doug's recommendations
- Learn a few key phrases in German
- Identify goals for this trip
- Buy a Journal (and bring it with you!)
- Brush Up on your Night Photography
- Read 'Why We Travel'





# PRICING & INCLUSIONS

## **PRICING: \$9,927 (total per one traveler sharing)**

Note: A single supplement of \$1560 can be paid if a traveler prefers their own room. Please inquire directly to Carrie Culp at Explorer X for more information.

Himba Experience Addition: \$565 per person

Balloon Safari Addition: \$690 per person

Halifax Island Boat Tour: \$45 per person

Please advise if you wish to add any of these options to your itinerary.

## **WHAT'S INCLUDED**

One Tour Leader on a free of charge basis

Accommodation and meals as specified in the itinerary

Transport & fuel in an air-conditioned 18-seater coach with an English-speaking guide

Photographic instruction by Doug Johnson including three critique sessions and instruction in the field

Naturalist guide, vehicles and driver at Ongava

Airport and hotel portorage (limited to one suitcase per person)

Scheduled excursions and activities as noted

National Park Entrance fees as noted

Passenger Liability insurance

Emergency Evacuation to nearest hospital

15% VAT

Tourism Levy

Final Photo Show via Zoom

## **WHAT'S NOT INCLUDED**

Additional meals and optional activities not noted

All beverages

Additional entrance fees not specified

Expenses of a personal nature

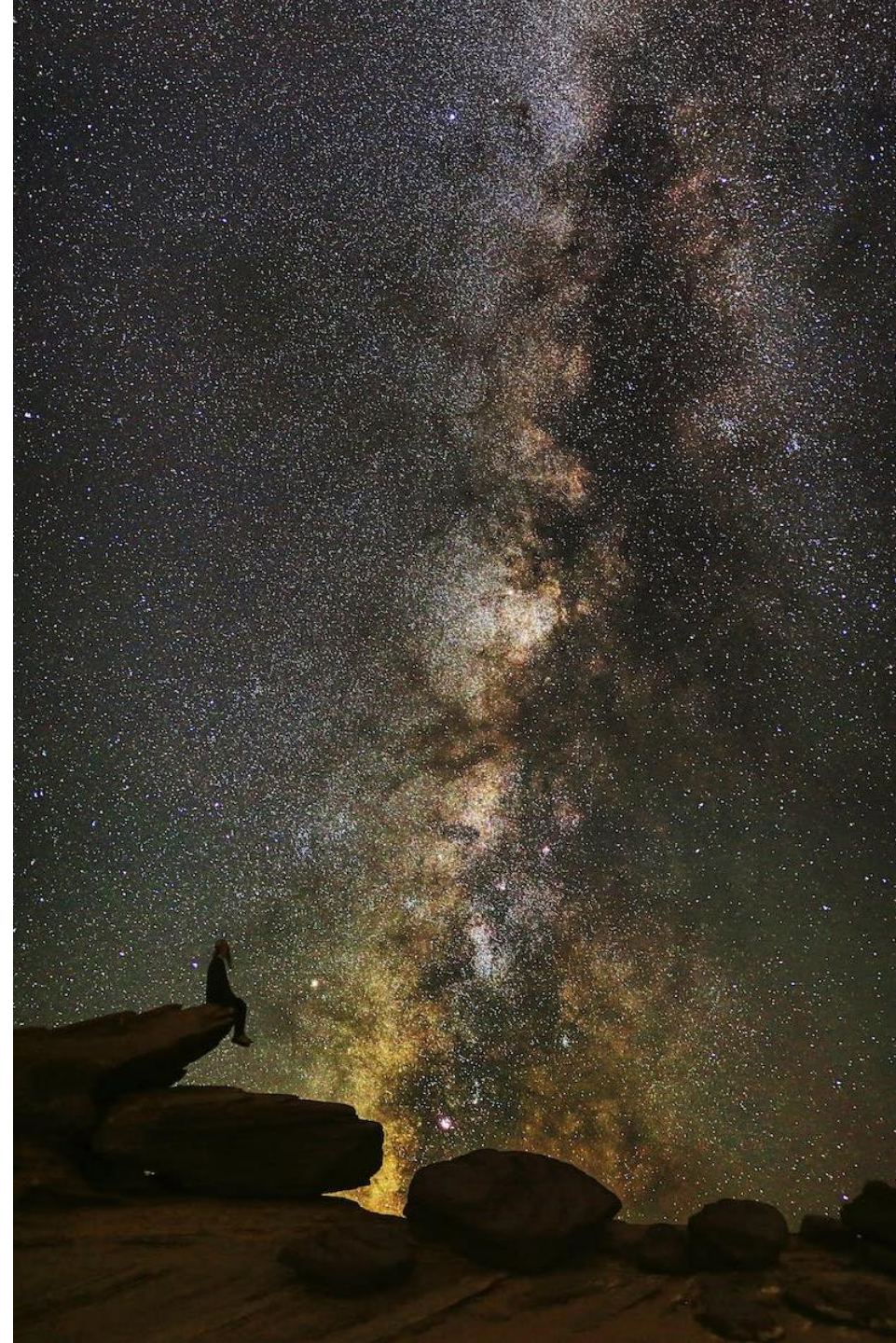
Travel Insurance > Strongly recommended!

Tips & gratuities for guides/drivers/staff

Visas/Visa Fees (no Visa for US citizens)

All Flights (International, Regional or Domestic), airport taxes or departure taxes

Note: At present Namibia has no requirements regarding Covid 19 for travelers from the US.





# LEGAL INFORMATION

## **Cancellations by You & Refunds**

Cancellation penalties imposed by Explorer X's suppliers are per person for land tour arrangements. To cancel your booking, you must send written notice to us by email at: [travel@explorer-x.com](mailto:travel@explorer-x.com). The following cancellation terms apply effective as of the date Explorer X receives written notice of cancellation:

### **Days Prior to Departure: Penalty**

- **90 days or fewer prior to departure date:** 100% of trip price
- **More than 90 days prior to departure date:** 25% of trip price

*\* Please Note: Explorer X will do our best to get as much money back for you as possible, but we cannot make any guarantees. If the trip is cancelled by Explorer X due to low participation or other factors determined by the company, the deposit amount will be refunded.*

No refunds will be provided for any unused portion of a trip once it begins, including if you leave a trip for any reason or are removed from the trip. There are no exceptions to this cancellation and refund policy, including for reasons related to weather, terrorism, civil strife, personal, family or medical emergencies or any other circumstances beyond our control. You will not be reimbursed for any personal expenses such as airfare, hotel, or other travel expenses due to changes in itineraries or cancellations. For this reason, we strongly encourage you to purchase trip cancellation and interruption insurance.

*Please be sure to review our [COVID-related change policies on the following page](#).*

## **Cancellations or Changes by Us & Flexibility**

We reserve the right to cancel, change, or modify any tour without prior notice for the safety and/or comfort of clients. You acknowledge that any aspect of your trip and itinerary may change without prior notice due to local circumstances or events, which may include mechanical breakdown, flight cancellations, illness, strikes, political disputes, weather, and other unforeseeable factors. If, prior to departure, we make a significant change because of a problem with a supplier, we will notify you of available alternatives as soon as reasonably possible. Any changes may require a supplemental payment from you or result in a refund less any cancellation fees and nonrefundable deposits. If we cancel, which is rare, a refund check will be issued to you less any airline ticket cancellation fees and nonrefundable deposits paid to local suppliers. This refund will constitute full settlement of claims you may have arising out of our cancellation. No refunds under this paragraph will be provided due to cancellations or changes due to Force Majeure. You will not be reimbursed for any personal expenses such as airfare, hotel, or other travel expenses due to changes in itineraries or trip cancellations.

## **Force Majeure**

Explorer X will not be deemed in breach of this agreement or otherwise liable to you, by reason of delay in performance or nonperformance of any of its obligations under this agreement to the extent that any such delay or nonperformance is due to any Force Majeure. "Force Majeure" means any circumstances beyond the reasonable control of Explorer X, including without limitation acts of God, terrorist activities, insurrection, explosion, flood, tempest, forceful wind, fire or accident, war or threat of war declared or undeclared, sabotage, civil disturbance, labor strikes, requisition, sickness, quarantine, government intervention, weather conditions, and unforeseen circumstances. If Explorer X and/or any of its suppliers are affected by Force Majeure, they shall be entitled to, and may in their sole discretion, vary or cancel any itinerary or arrangement in relation to the tour. Regarding civil unrest, once Explorer X has investigated the prevailing situation, as it deems fit, it shall remain in Explorer X's sole and absolute discretion whether to proceed with the tour.

*Explorer X is a registered **Seller of Travel** in the state of Washington (#604151500).*



# LEGAL INFORMATION

## COVID-RELATED TRIP CHANGES

COVID has presented travelers (and travel companies like Explorer X) with a myriad of unforeseen complexities and complications. As we all navigate through the seemingly ever-changing entry requirements and various rules and regulations of different destinations, staying flexible, communicating with one another, and flexing our empathy muscles is more critical than ever. We have developed the following policies to protect both our travelers and the time, effort, and energy of our staff who work so hard on these crafting extraordinary experiences for travelers like you.

### COVID-Related Changes Due to New Entry Requirements & Border Closures

In the event that a trip is postponed due to COVID-related border closures or new entry restrictions for either your destination or your return home (ex: mandatory quarantine) AND there are no/few substantive changes to the itinerary, then the following applies:

- First Date Change: No fee from Explorer X; additional supplier fees may apply
- Second Date Change: \$350 change fee from Explorer X; additional supplier fees may apply
- Each Additional Date Change: \$350 change fee from Explorer X; additional supplier fees may apply

In the event that a client's travel plans change due to COVID-related border closures or new entry restrictions for either your destination or your return home (ex: mandatory quarantine) and there are substantive changes to the itinerary, including the client choosing to travel to another destination, then the following applies:

- First Change: \$350 change fee from Explorer X; additional supplier fees may apply
- Each Subsequent Change: \$350 change fee from Explorer X; additional supplier fees may apply

*\* For destination changes: Please note that we will do our best to apply your deposit to your new destination, but we cannot guarantee that that will be possible.*

### COVID-Related Changes Due to Traveler Preference

If a client postpones a trip due to COVID when they reasonably could have traveled to their destination, or if the client changes destinations for non-COVID reasons, then ...

- Date Change w/ No Substantive Itinerary Change: \$350 change fee from Explorer X; additional supplier fees may apply
- Date Change w/ Substantive Itinerary Change OR Destination Change: \$350 change fee from Explorer X; deposit is nonrefundable; additional costs associated w/ new itinerary

### Vaccinations & Booster Shots

It is the responsibility of the traveler to ensure that you abide by the COVID vaccination requirements of the destination(s) that you will be traveling to. This includes ensuring that you have the appropriate COVID vaccinations and, where/when appropriate, booster shots. Any trip that is cancelled or delayed due to a traveler not having the proper vaccinations and/or booster shots is nonrefundable, and Explorer X has no responsibility to reimburse the traveler(s) for lost funds.



# CONTACT INFORMATION

## **Explorer X**

Travel@Explorer-X.com

Phone: +1 (507) 407-4376

4114 13<sup>th</sup> Ave South

Seattle, WA USA 98108

## **Emergency Contact @ Explorer X**

Carrie Culp | Africa Specialist / Travel Mentor

Carrie@Explorer-X.com

Mobile: +1 (206) 310-8165 (also via Whats App)

## **Emergency Contact @ Destination**

Peter Sawyer | General Manager

Peter.sawyer@privatesafaris.com